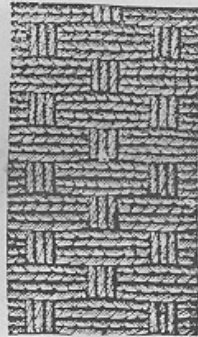


### TIDY STITCH

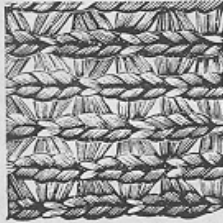
Set up flat web of required width ; knit once across ; change the stitch on the second needle to the third needle, the fourth to the fifth, and so on across, moving to the left ; knit across, forming loops over the empty needles ; knit back again, forming stitches with these loops ; put the stitch of the second needle over the first, that of the fourth over the third, moving the stitches to the right, knit across and back as before, change the stitches to the left, and continue.



### BASKET STITCH

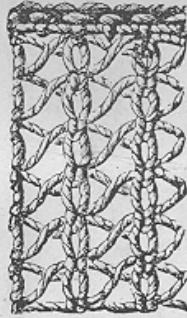
Set up for either circular or flat web the number of needles required ; knit three or more rows round or across ; stop with yarn carrier at front ; commence at the right and take out alternate groups of three needles and let them hang upon their own loops inside of cylinder (this will leave three needles in action and three out). Knit three rows round or across ; replace the hanging needles ; knit three rows across ; leave the hanging needles in the cylinder, and take out the other groups of three needles, knit three rows and continue as above.

(36)



### TWISTED STITCH

Have every other needle in ; knit across ; lift every other needle above the cams ; knit three times across ; push the needles down and knit once across plain ; take up the needles that were down before and knit three times across ; put all the needles down and knit once across plain ; lift the needles previously in work and knit across three times ; proceed thus for the desired length.



### LASSO STITCH

Set up flat web of required width ; knit a few rows ; commence at the right and transfer the loop of the second needle to the next needle—that is, put the second needle on the first, the fourth on the third, and so on ; replace the empty needles ; knit two rows to form loops on the empty needles. Transfer the loop of the second needle on the first ; the fourth and sixth on the fifth needle ; eighth and tenth on the ninth needle ; continue in this way, transferring one second loop to the right and one to the left ; knit two rows. Transfer the loops again, but in the opposite direction—that is, put the second and fourth on the third needle, the sixth and eighth on the seventh needle, and so on ; knit two rows ; repeat the transfer of the loops, reversing the direction every time, and being careful to start each time on the same needle and knitting for the length required.

(37)

## MEN'S HALF HOSE

Heavy Weight Goods

Sizes No. 9 to 11 can be made on  $4\frac{1}{2}$  inch machine.

Medium or Light Weight Goods

Sizes No. 9 to 11 can be made on 4 inch machine.

## LADIES' HOSIERY

Heavy Weight Goods

Sizes No. 9 to 11 can be made on 4 inch machine.

Medium or Light Weight Goods

Sizes No. 9 to 11 can be made on  $3\frac{1}{2}$  inch machine.

## CHILDREN'S HOSIERY

Sizes No. 4,  $4\frac{1}{2}$ , 5 and  $5\frac{1}{2}$  can be made on  $2\frac{1}{2}$  inch machine.

Sizes No. 6,  $6\frac{1}{2}$ , 7 and  $7\frac{1}{2}$  can be made on 3 inch machine.

Sizes No. 8,  $8\frac{1}{2}$ , 9 and  $9\frac{1}{2}$  can be made on  $3\frac{1}{2}$  inch machine.

Machines with less than 5.94 needles per inch in cylinder will knit heavy weight goods.

Machines with more than 5.94 needles per inch in cylinder will knit medium or light weight goods.

Mitts and fancy goods are made on same machines.

The cylinder for the  $4\frac{1}{2}$  inch machine is cut for the following number of needles: 60, 72, 84, 96, 108, 120, 132, 144 and 156.

Cylinders for the smaller sizes machines are cut in proportion. See table on page 39.

(38)

## Table Showing Number of Needles in Cylinders

The gauge is always figured from the  $4\frac{1}{2}$ -inch machine. This table will show the proper proportion of needles in machines smaller than  $4\frac{1}{2}$ -inch, as compared with the number of needles in the  $4\frac{1}{2}$ -inch machine.

The greater the number of needles in the cylinder, the finer the heft of yarn required and the lighter the weight of stocking will be. If we were to put the same number of needles in the  $2\frac{1}{2}$ -inch machine as in the  $4\frac{1}{2}$ -inch, the goods would then not compare, and also you would be compelled to have different yarns for each machine. In order to use the heft of yarn and produce the same weight of goods on the small as on the large machine, we will have to reduce the number of needles in the small machine so as to be the same proportion, according to size, as the large machine.

	DIAMETER OF CYLINDER			Needles per Inch		
	$4\frac{1}{2}$	4	$3\frac{1}{2}$		3	$2\frac{1}{2}$
	60	54	46	40	34	4.24
	72	64	56	48	40	5.09
	84	74	66	56	46	5.94
	96	86	74	64	54	6.79
	108	96	84	72	60	7.64
	120	106	94	80	66	8.49
	132	118	102	88	74	9.34
	144	128	112	96	80	10.19
	156	138	122	104	86	11.03

(39)

## YARNS

Needles in 1/4 inch Cyl.	Needles in 1/2 inch.	Single Cotton.	Cotton 2 Ply.	Wool Cut.	Wool 2 Ply.	Wool 3 Ply.	Worsted No.
60	4.24	3	6	8	16	24	4
72	5.09	3	7	9	18	27	4½
84	5.94	4	8	10	20	30	5
96	6.79	4	9	11	22	33	6
108	7.64	5	10	12	24	36	7
120	8.49	5	11	14	28	42	8
132	9.34	6	12	16	32	48	9
144	10.19	6	13	18	36	54	10
156	11.03	7	14	20	40	60	10½

The above table will give you an idea as to the sizes of yarns required on the different machines, but these numbers vary according to the length of stitch, gauge of needle, etc.

## TABLE FOR KNITTING HOSIERY

The table of sizes has been carefully prepared from socks and stockings made on the Model machine. Much depends upon the quality of yarn used and the tightness of the stitch, that they cannot be followed absolutely, but are only to be taken as indicating the approximate number of rows required.

We would suggest that the operator prepare for himself a table of sizes to suit his or her particular desire. Knit a piece of webbing a few inches in length of the yarn that is to be used. Remove this from the machine and count the number of courses or rows of stitches to one inch. Multiply this by the number of inches required for the different parts of the stocking, making due allowance for the length of heel and toe. The measurements given for the legs and ankles of stockings are exclusive of the number of rows that are knitted while the narrowings in the heel are being made.

(40)

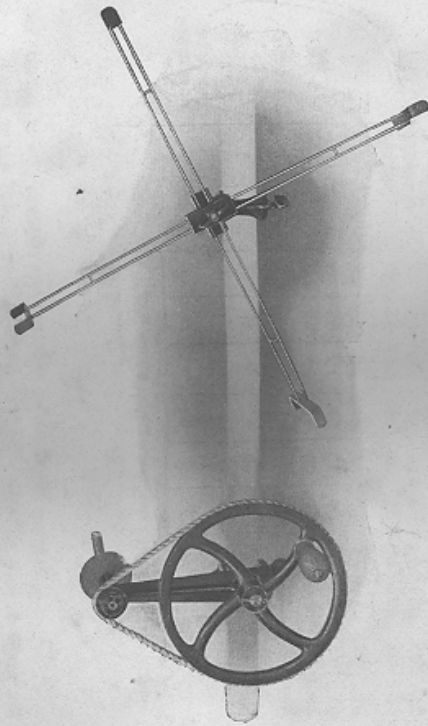
When a rib top is not required and you wish to knit a plain leg portion, then add the first two columns together for the length of leg.

NEEDLES IN CYLINDER	SIZES	MEN'S SOCKS				MEN'S LONG-STOCKINGS				WOMEN'S HOSE		
		Ribbed Tops	Leg	Foot	Ribbed Top	Leg	Foot	Leg	Foot	Ankle	Foot	
60	Small . . .	38	55	50	40	60	45	50	100	45	42	
	Medium . .	38	59	54	40	65	45	54	105	45	46	
	Large . . .	38	63	58	40	70	45	58	110	45	50	
72	Small . . .	50	75	60	56	70	50	60	120	50	50	
	Medium . .	50	80	65	56	78	50	65	130	50	55	
	Large . . .	50	85	70	56	86	50	70	140	50	60	
84	Small . . .	50	80	65	65	100	55	65	175	55	52	
	Medium . .	50	87	72	65	110	55	72	185	55	59	
	Large . . .	50	94	79	65	120	55	79	195	55	65	
96	Small . . .	70	90	70	78	125	60	70	195	60	54	
	Medium . .	70	98	78	78	135	60	78	205	60	62	
	Large . . .	70	106	86	78	145	60	86	215	60	70	
108	Small . . .	80	100	90	88	150	70	90	230	70	70	
	Medium . .	80	110	100	88	165	70	100	245	70	80	
	Large . . .	80	120	110	88	180	70	110	260	70	90	
120	Small . . .	90	110	105	100	175	80	105	265	80	80	
	Medium . .	90	122	118	100	190	80	118	280	80	90	
	Large . . .	90	134	130	100	205	80	130	295	80	105	
132	Small . . .	100	120	110	115	200	90	110	300	90	85	
	Medium . .	100	134	125	115	215	90	125	315	90	98	
	Large . . .	100	148	140	115	230	90	140	330	90	110	
144	Small . . .	110	135	120	140	210	100	120	320	100	90	
	Medium . .	110	150	138	140	230	100	138	340	100	105	
	Large . . .	110	165	156	140	250	100	156	360	100	120	
156	Small . . .	120	150	135	160	225	110	135	340	110	95	
	Medium . .	120	166	154	160	245	110	148	360	110	114	
	Large . . .	120	185	175	160	265	110	166	380	110	120	

The above figures will vary according to quality of yarn, length of stitch, etc.

(41)

PRICE LIST OF HOSIERY BOARDS OR FORMS



WINDER AND SWIFT

This winder is adapted for winding skein yarn on to the bobbins. The swift can be adjusted to any size skein and is wound direct on the bobbin. This winder can be run at a high speed.

Both winder and swift are made of iron and can be attached to any ordinary table or ledge, by means of thumb screws.

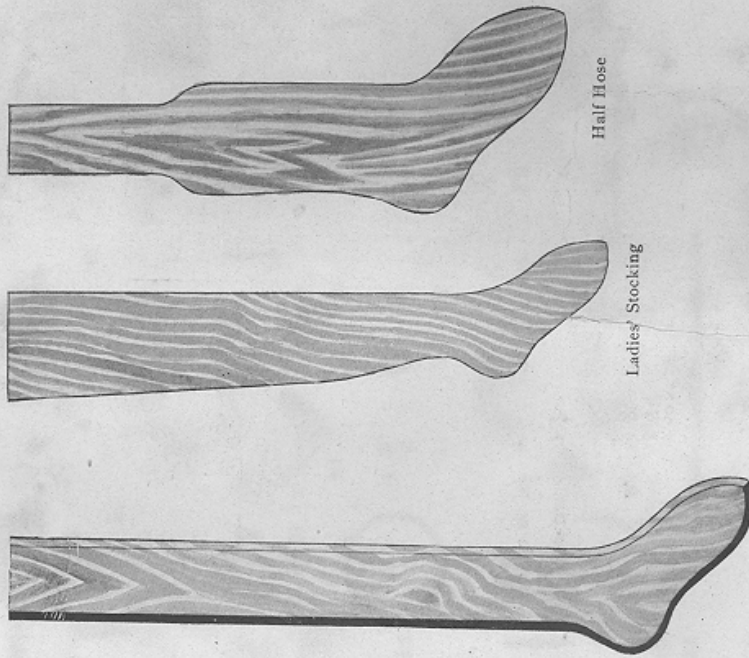
Price of winder . . . . . \$2.00  
 Price of swift . . . . . 2.00  
 Bobbins . . . . . each .06

EXTRA NEEDLE CYLINDERS

Our cylinders are interchangeable and cylinders with a different number of needles can be used in the same machine. The cylinders must be the same size and the advantage of having extra cylinders with either more or less needles is in knitting either a coarser or finer weave.

We can supply extra cylinders to fit your machine containing our regular number of needles.

(42)



Children's Stocking

Ladies' Stocking

Half Hose

CHILDREN'S STOCKINGS

Plain or Shaped

Size No. 4 and 4½, each 14 cts.	Size No. 7 and 7½, each 26 cts.
" " 5 " 5½, " 18 "	" " 8 " 8½, " 30 "
" " 6 " 6½, " 22 "	" " 9 " 9½, " 34 "

LADIES' STOCKINGS

Plain or Shaped

Size No. 8 and 8½, each 30 cts.	Size No. 8 and 8½, each 22 cts.
" " 9 " 9½, " 34 "	" " 9 " 9½, " 24 "
" " 10 " 10½, " 36 "	" " 10 " 10½, " 25 "
" " 11 " 11½, " 38 "	" " 11 " 11½, " 26 "

MEN'S HALF HOSE

These boards are made from selected rock maple and will not warp or splinter.

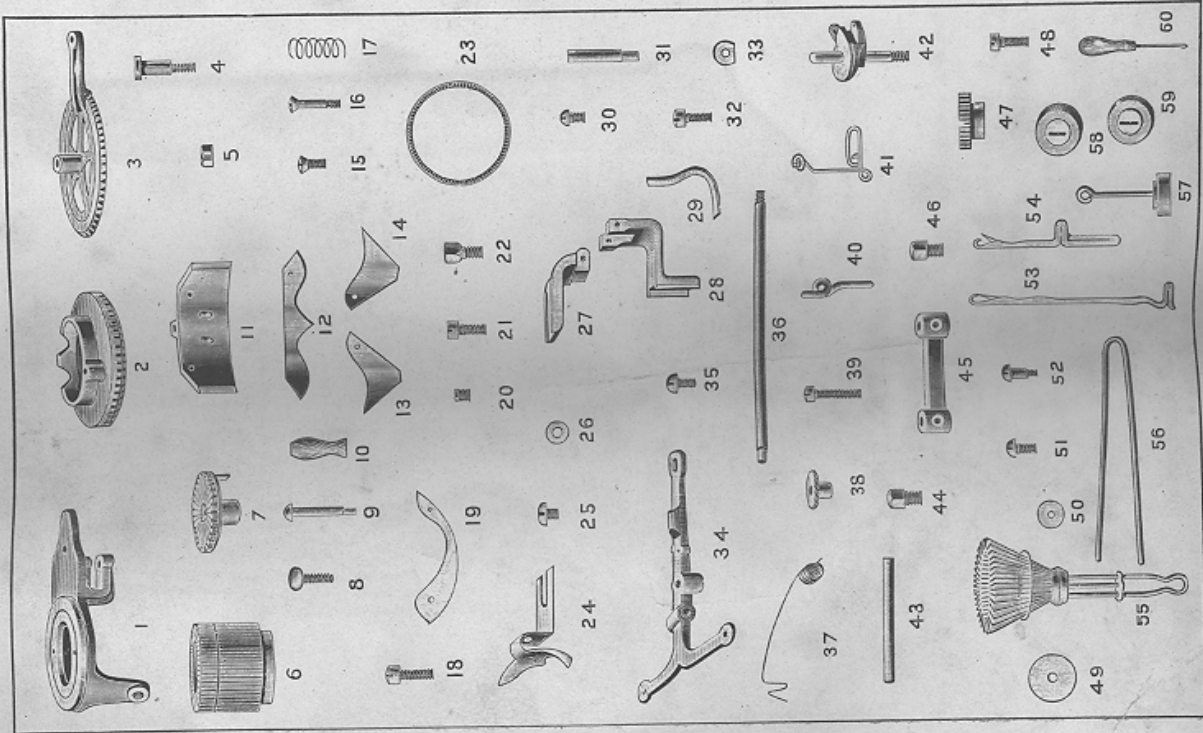
(43)

# NAME AND PRICE LIST OF PARTS

1	Bed Plate,	.....	.....	\$2.00
2	Gear Ring,	.....	.....	1.50
3	Gear Wheel,	.....	.....	.75
4	Gear Wheel Stud,	.....	.....	.20
5	Gear Wheel Stud Nut,	.....	.....	.05
6	Needle Cylinder,	.....	.....	5.00
7	Dial,	.....	.....	4.00
8	Thumb Screw,	.....	.....	.15
9	Handle Pin,	.....	.....	.15
10	Handle,	.....	.....	.10
11	Cam Plate,	.....	.....	.35
12	Top Cam,	.....	.....	.60
13	Cylinder Left Stitch Cam,	.....	.....	.30
14	Cylinder Right Stitch Cam,	.....	.....	.30
15	Cylinder Cam Screw,	.....	.....	.05
16	Carrier Joint Screw,	.....	.....	.05
17	Stitch Regulator Spring,	.....	.....	.05
18	Dial Cam Binding Screw,	.....	.....	.05
19	Dial Stitch Cam,	.....	.....	.75
20	Regulator Binding Screw,	.....	.....	.05
21	Regulator Set Screw,	.....	.....	.05
22	Dial Arm Set Screw,	.....	.....	.05
23	Cylinder Band,	.....	.....	.10
24	Yarn Carrier,	.....	.....	.55
25	Yarn Carrier Screw,	.....	.....	.05
26	Yarn Carrier Washer,	.....	.....	.03
27	Yarn Carrier Top Arm,	.....	.....	.35
28	Yarn Carrier Bottom Arm,	.....	.....	.35
29	Yarn Carrier Spring,	.....	.....	.08
30	Yarn Carrier Spring Screw,	.....	.....	.05
31	Cam Plate Stud,	.....	.....	.10
32	Yarn Carrier Arm Set Screw,	.....	.....	.05
33	Yarn Carrier Arm Washer,	.....	.....	.03
34	Yarn Guide,	.....	.....	.40
35	Yarn Guide Set Screw,	.....	.....	.05
36	Yarn Guide Post,	.....	.....	.25
37	Take-up Spring,	.....	.....	.15
38	Take-up Nut,	.....	.....	.10
39	Take-up Nut Screw,	.....	.....	.05
40	Yarn Eye,	.....	.....	.04
41	Yarn Lock,	.....	.....	.15
42	Dial Cap,	.....	.....	1.00
43	Dial Post,	.....	.....	.15
44	Dial Set Screw,	.....	.....	.05
45	Dial Arm,	.....	.....	.50
46	Dial Post Screw,	.....	.....	.05
47	Dial Hand Nut,	.....	.....	.15
48	Cylinder Screw,	.....	.....	.05
49	Dial Shaft Washer,	.....	.....	.10
50	Regulator Screw Washer,	.....	.....	.03
51	Dial Washer Screw,	.....	.....	.05
52	Dial Cam Set Screw,	.....	.....	.05
53	Cylinder Needles, per dozen,	.....	.....	.25
54	Dial Needles, per dozen,	.....	.....	.25
55	Set-up	.....	.....	1.00
56	Heel Hook,	.....	.....	.15
57	Weight Hook,	.....	.....	.30
58	Large Weight,	.....	.....	.15
59	Small Weight,	.....	.....	.10
60	Work Hook,	.....	.....	.10
	Instruction Book,	.....	.....	.15

These prices do not include transportation charges.

(45)



(44)

